



BOA



- Hull design for improved towing speed and consumption
- Flush deck
- Cargo up to 940 t
- Voluminous cargo up to 480 m²
- Deck strength of 12t/m²

BOABARGE 15

Heavy deck cargo barge



BOABARGE 15

General Information

Vessel's Name	BOABARGE 15
Flag	Norwegian, NOR
Port of Registry	Trondheim
Call Sign	LK5188
Class Society	NMD
Class Notations	1A1
Year built	1994
Builder	Cherepovetz Shipyard
Place built	Russia
Owner	Boa Tugs AS
Manager	Boa Management AS

Dimensions

Length, Overall	33.80 m
Breadth, moulded	14.40 m
Depth, moulded	3.20 m
Draught, fully loaded	2.61 m
Deck space	480 m ²
WEB Frame Spacing	2.8 m
Gross tonnage	371
Net tonnage	111

Hull Strength Loads

Middle of stiffner span	11 t
Bulkhead/Bulkhead connection	70 t
Bulkhead/Girder connection	80 t

Cargo Capacities

Deadweight (T = 4,891 m)	940 t
Deck strength	12 t/m ²

Navigational Lights

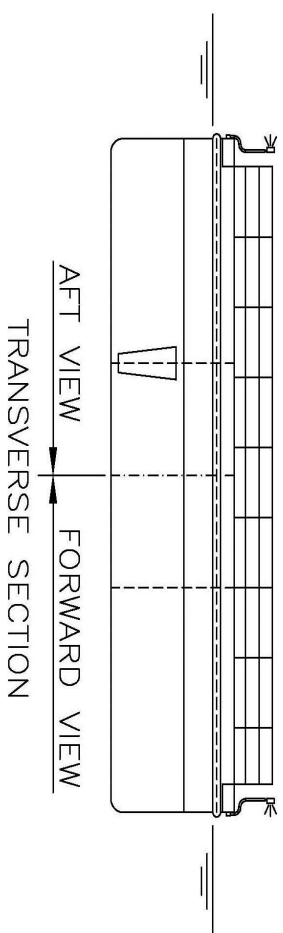
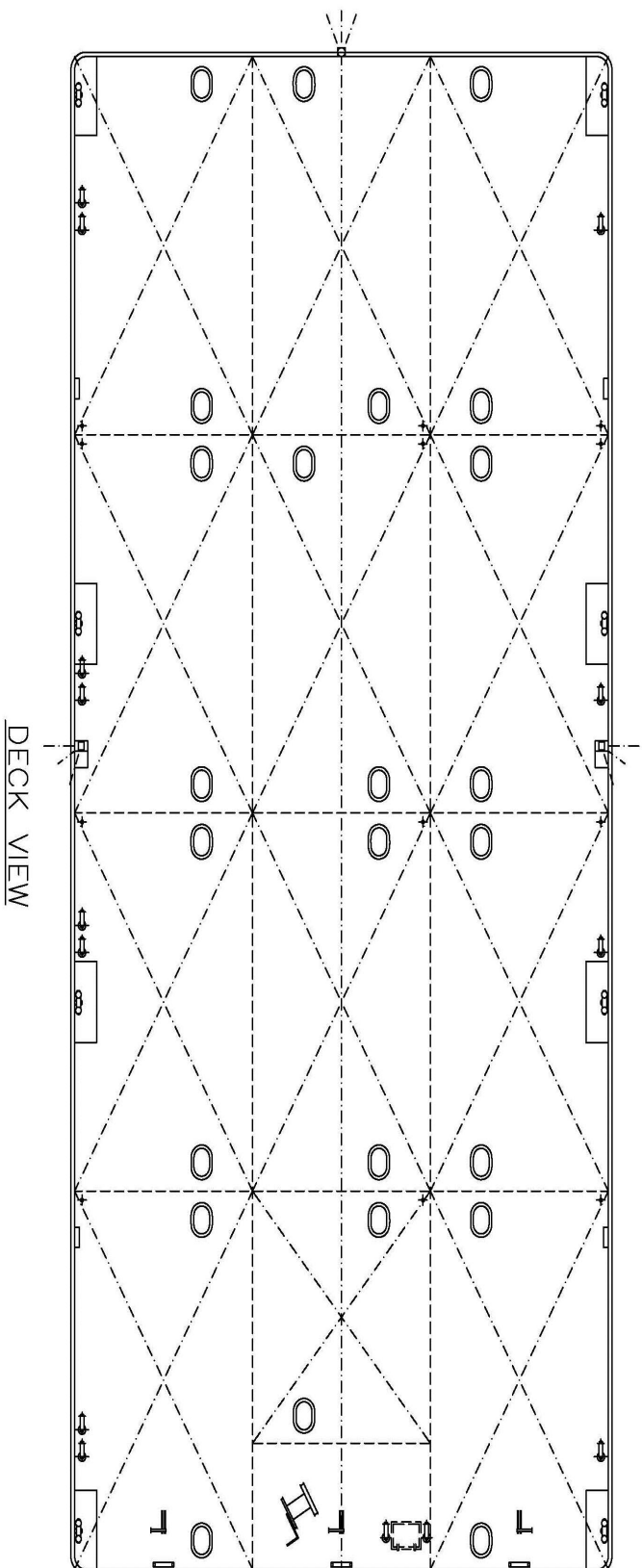
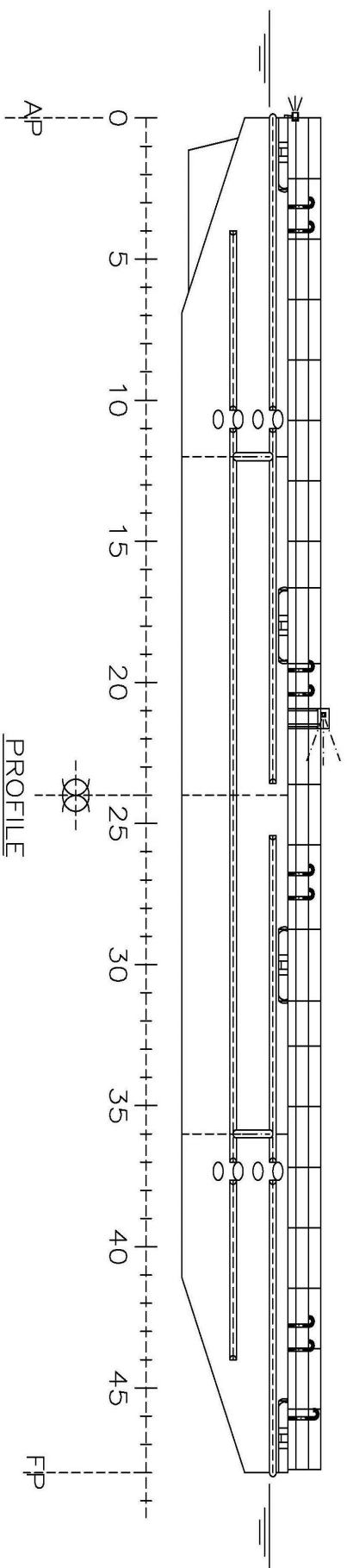
Navigational lights as set forth by governing laws within country of registry (flag).

Towing & Mooring Equipment

Bollards	8 x recessed double bollards (NS 2584, size 160), four each side
Fair leads	3 x fair leads (NS 2588, size 300 x 200)
Smit Brackets	3 x smith brackets (breaking load 150 tonnes)

Main and emergency towing arrangement designed for 150 tonnes breaking load.







CORPORATE HEADQUARTERS

BOA Management AS
Strandveien 43
7067 Trondheim
Norway
+47 73 99 11 99
tugs@boa.no

www.boa.no